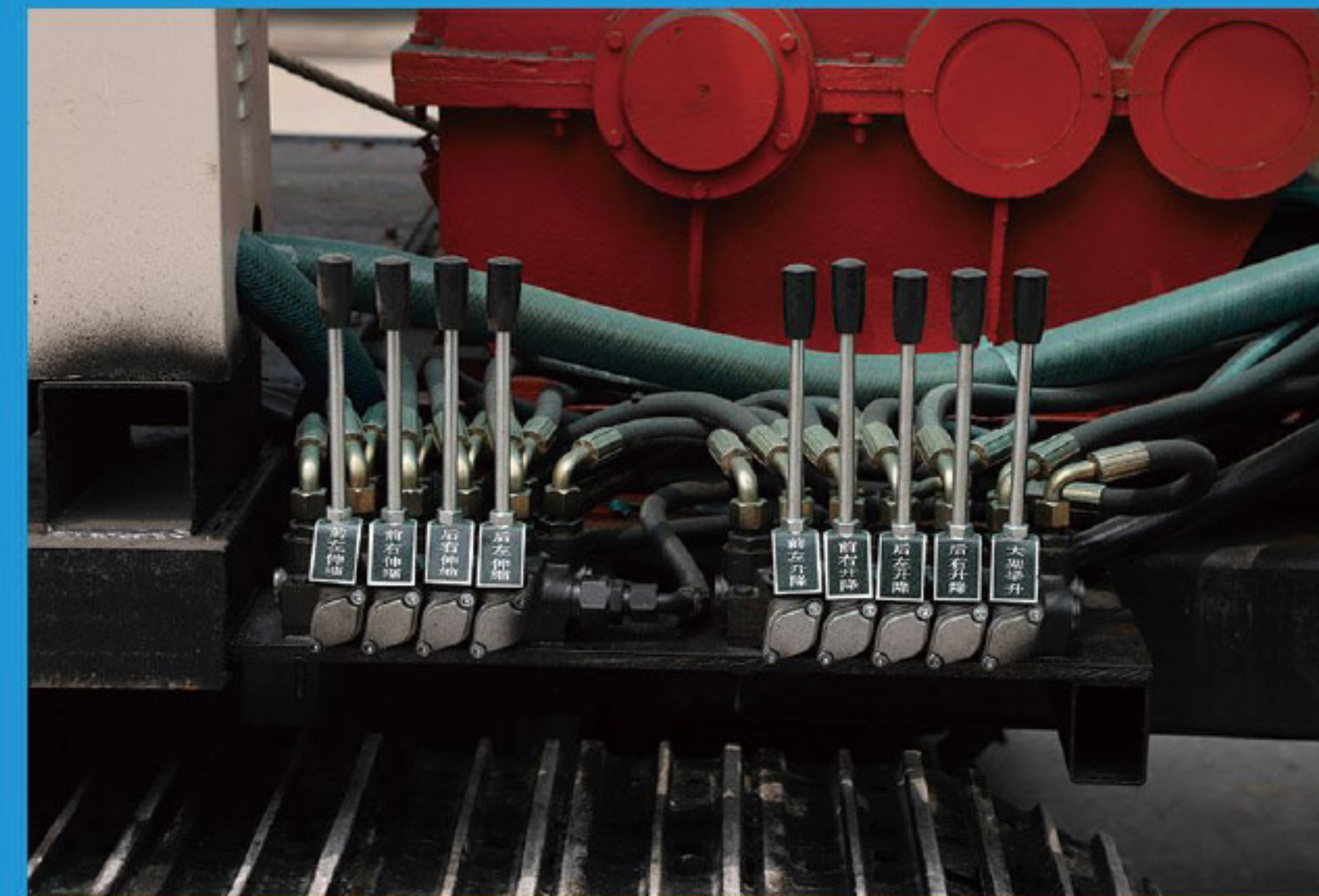
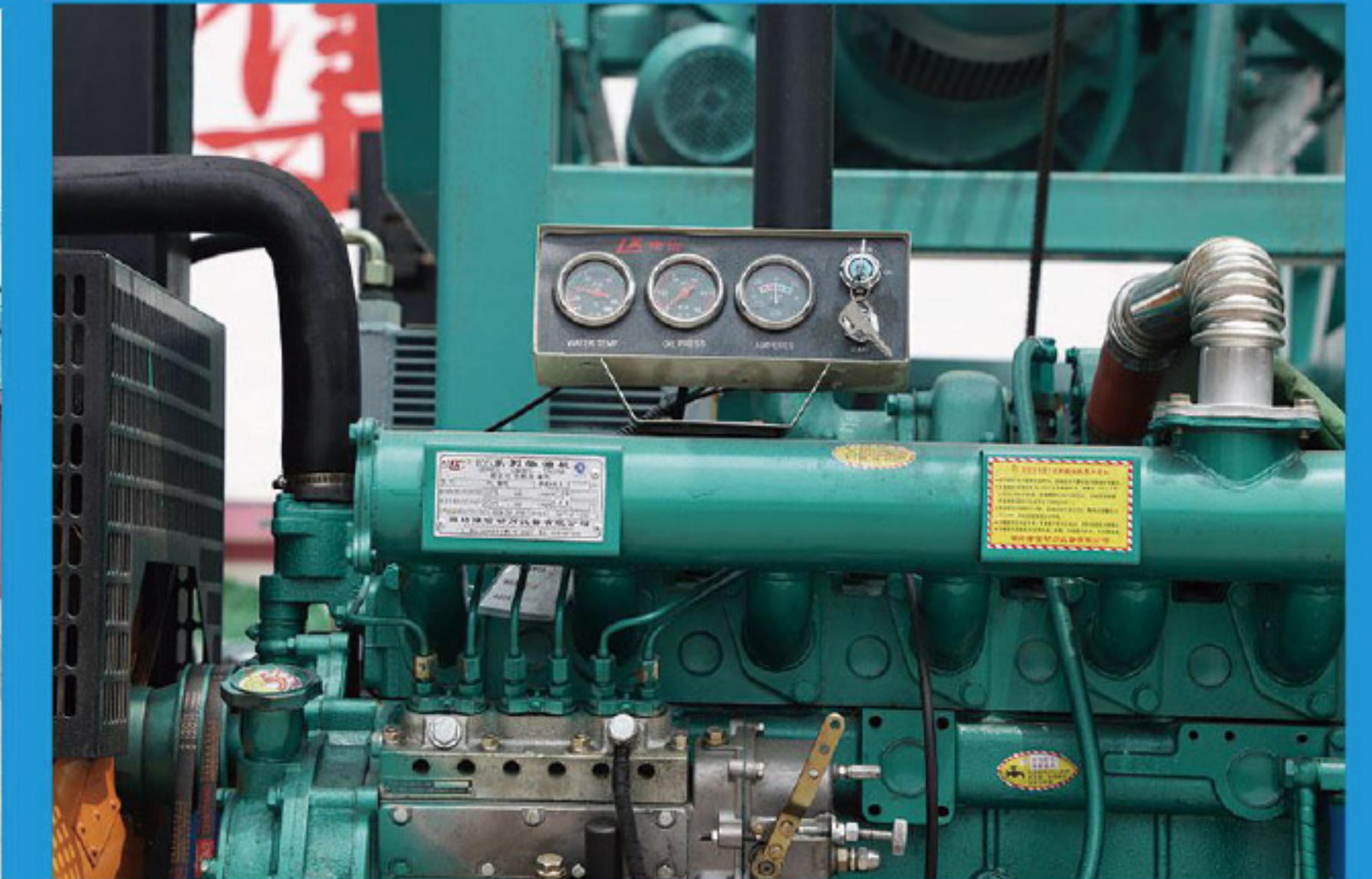


HF-400L REVERSE CIRCULATION RIG

1. The rig adopts engineering crawler, hydraulic walking chassis, easy to move, more suitable for plain, plateau, hilly and other land forms. The chassis has four legs, and the drilling machine has small vibration and good stability during drilling.
2. Reverse circulation drilling rig is multi-functional, all key components are cost-effective products, and the system is equipped with pressure protection and alarm device.
3. the reverse circulation drilling rig has the actuators , the instrument is on the operation table, the operation is convenient and reliable.
4. The reverse circulation drilling rig adopts a unique drill frame, which has large drilling process, large anti-torsion capability, simple structure, convenient maintenance, easy relocation, convenient operation of the orifice, and construction of large top angle drilling.



Main technical parameters

Model	HF-400L	
Drilling depth (m)	≤400	
Drilling diameter (mm)	500-5000	
Spindle speed (r/min)	5-22	
Spindle power (kw)	18.5×2	
Spindle torque (N·m)	42000	
Hoisting lifting force (t)	60	
Mud pump	Flow(m³/h)	1200
	Power(kw)	75
Generator set	Rated voltage(V)	380
	Rated current(A)	270
	Rated speed(r/min)	1500
	Rated power(kw)	200
Main machine power	210kw diesel engine	
Overall Dimensions(L*W*H)(mm)	9200×2500×3500	
Single weight (t)	30	